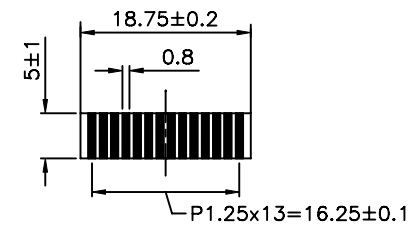
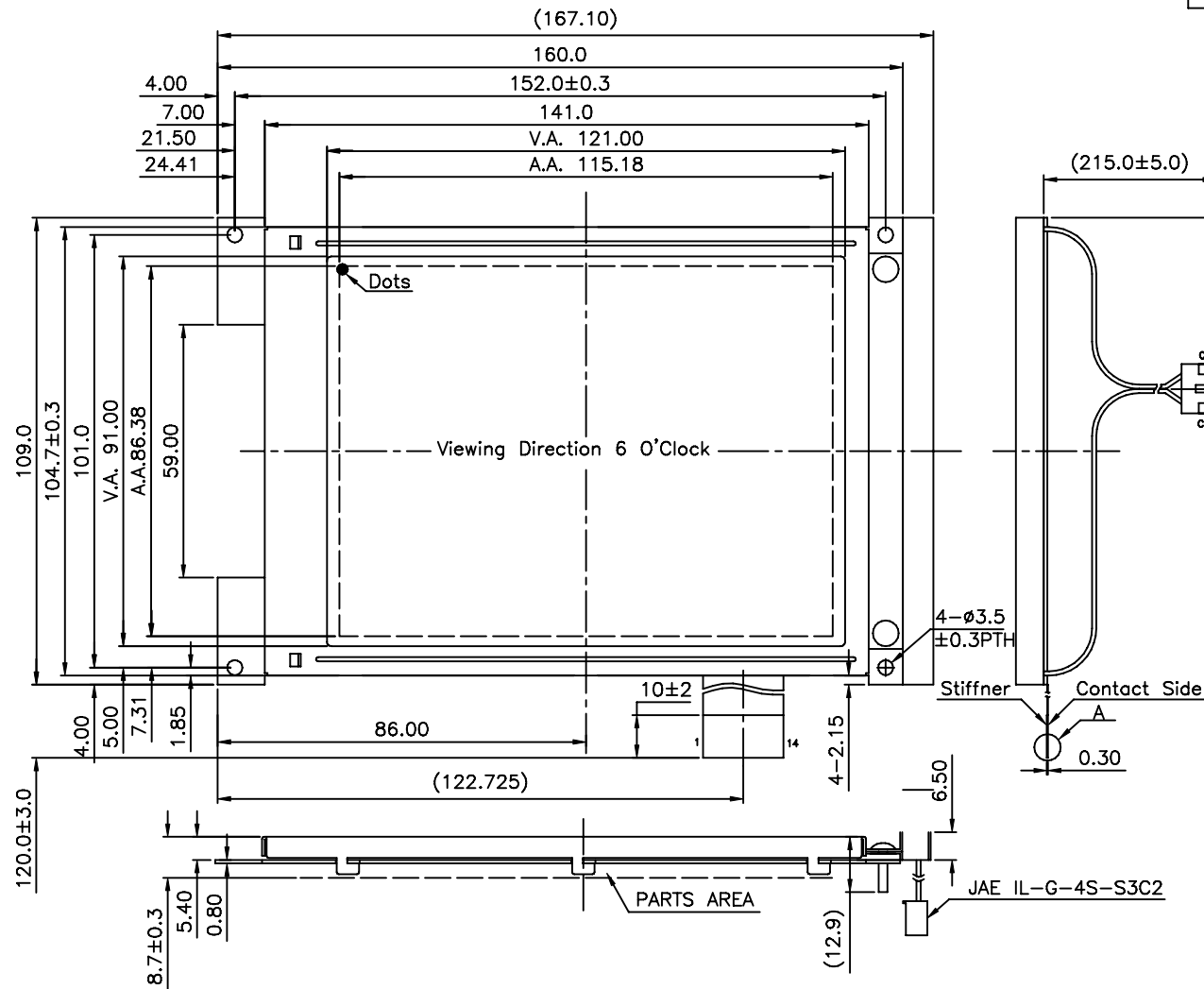
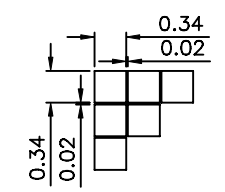


REV	Description	Date
A01	Revise Spec	2007-MAR-17



SACLE=2:1
A DETAIL



SACLE=20:1
DOTS DETAIL


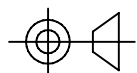
- Specifications:
- 1) STN/-VE//BLUE/Transmissive Mode
 - 2) 1/240 Duty, 1/16 Bias, Vop=23.5V
 - 3) Viewing Angle = 6 o'clock
 - 4) Op. Temp.= 0°C To +50°C
St. Temp.= -20° To +70°C
 - 5) With White LED backlight, 3.1 ~ 3.3V@150mA

PIN ASSIGNMENT:

PIN#:	1	2	3	4	5	6	7	8	9	10	11	12	13	14
NAME:	D0	D1	D2	D3	DISPOFF	FLM	M	LP(CL1)	XCK(CL2)	VDD	VSS	+24V	VADJ	FG

LED BACKLIGHT PIN-OUT:

C1	C2	C3	C4
LED+	NC	NC	LED-

Description: MECHANICAL SPECIFICATIONS	
Scale:	 TRI-T COMPANY LIMITED
Sheet : 1 of 1	
Unspecified Tol. ±0.3	Unit mm
Approvals	Date
Draw:	Project Number
Check:	TMTG320240B-03
Approve:	Do Not Scale This Drawing
Item Number	
	
Projection	