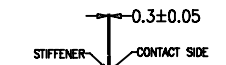
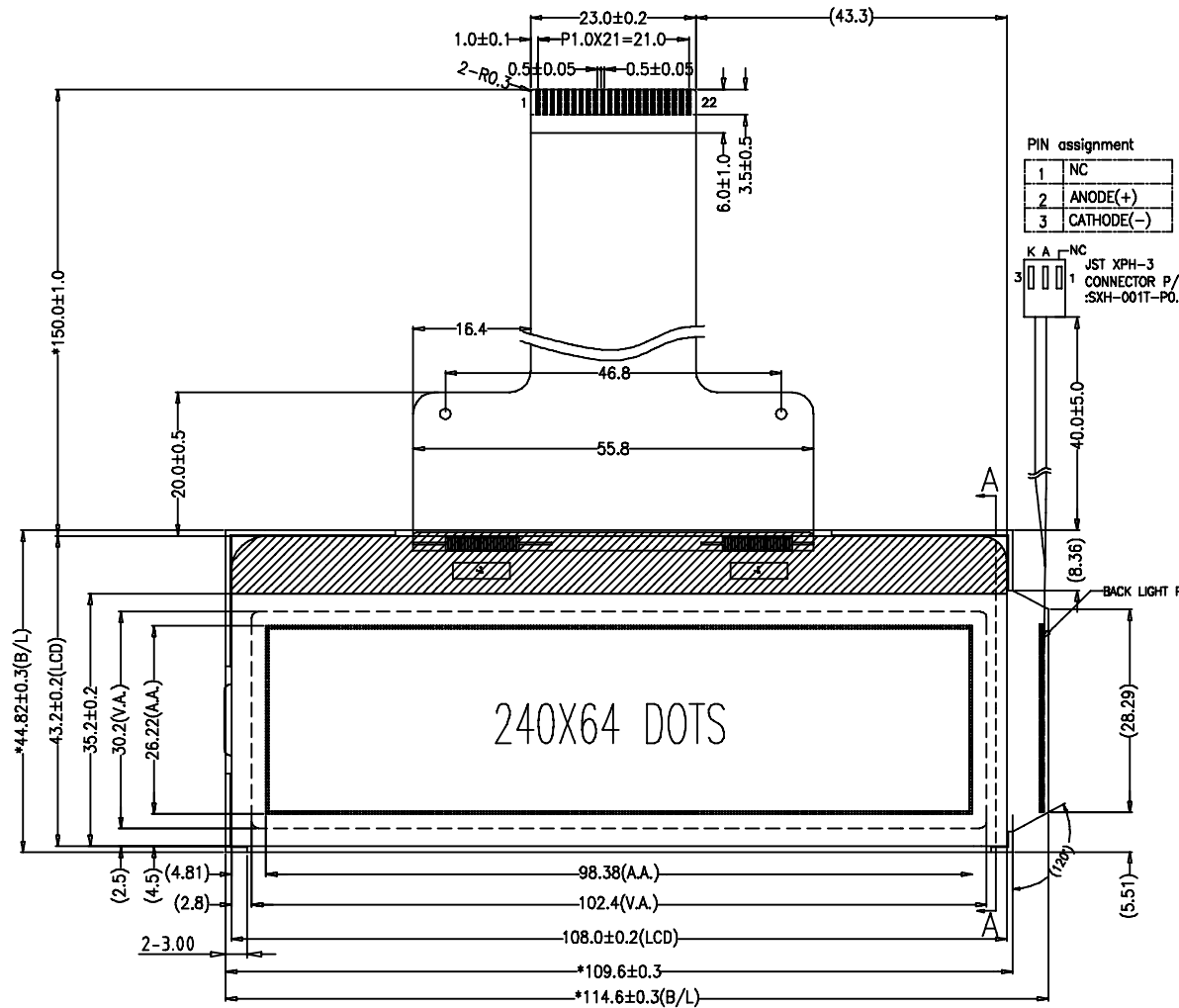


REV	Description	Date
A00	First Issue	2007-FEB-07



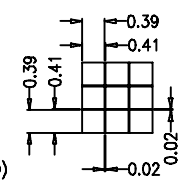
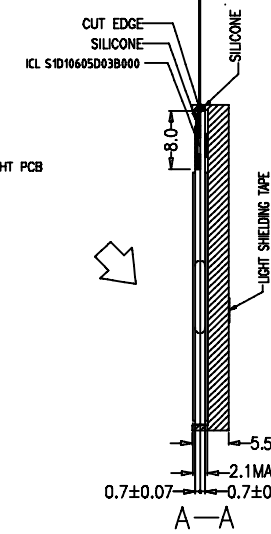
PIN ASSIGNMENT:

PIN	SYMBOL
1	RES
2	CSA
3	CSB
4	A0
5	SCL(D6)
6	SI(D7)
7	VDD
8	VSS
9	VOUT
10	CAP3-
11	CAP1+
12	CAP1-
13	CAP2-
14	CAP2+
15	V1
16	V2
17	V3
18	V4
19	V5
20	VR
21	IRS
22	NC

PIN assignment

1	NC
2	ANODE(+)
3	CATHODE(-)

K A NC  
JST XPH-3  
CONNECTOR P/N  
:SKH-001T-P0.6



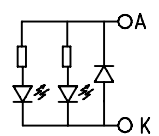
LCD SPECIFICATIONS:

- 1)STN/-VE/BUE/ TRANSMISSIVE MODE
- 2)1/64 DUTY, 1/9 BIAS, VLCD=11.0V
- 3)VIEWING ANGLE= 6 O'CLOCK
- 4)OP.TEMP.=-20°C TO +70°C  
ST.TEMP.=-30°C TO +80°C
- 5) IC=S1D10605D03B000, VDD=3.0V(MIN.), 3.3V (TYP.), 3.6V MAX
- 6) RoHS COMPLIANCE

BACKLIGHT SPECIFICATIONS:

- 1) FORWARD VOLTAGE, VF=4.0±0.2V
- 2) FORWARD CURRENT, IF=30mA
- 3) COLOR :WHITE
- 4) MATERIAL ARE UL94-V0 GRADE

BACKLIGHT CIRCUIT ( 2x1=2 LEDs)



Description: MECHANICAL SPECIFICATIONS

Scale:	
Sheet : 1 of 1	
Unspecified Tol. ±0.3	Unit mm
Approvals	Date
Draw:	
Check:	
Approve:	



TRI-T COMPANY LIMITED

Project Number	Item Number	
TMGG24064-04		
Do Not Scale This Drawing		Projection