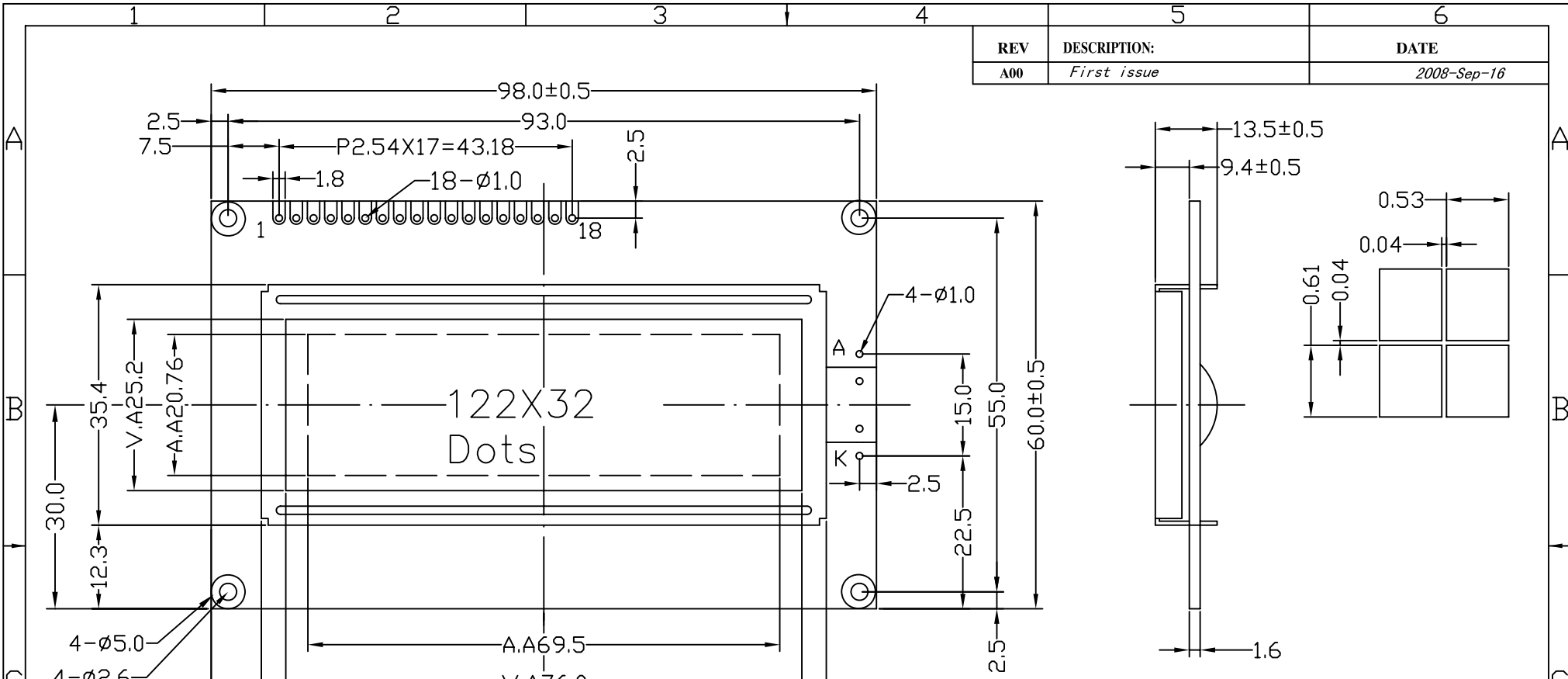



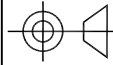
REV	DESCRIPTION:	DATE
A00	First issue	2008-Sep-16



PIN NO	1	2	3	4	5	6	7	8	9
NAME	VSS	VDD	VEE	A0	CS1	CS2	D0	D1	D2
PIN NO	10	11	12	13	14	15	16	17	18
NAME	D3	D4	D5	D6	D7	A	K	RD(E)	WR(R/W)

**Specification:**

- 1) Display type: STN Grey Mode/Transflective/positive
- 2) Drive method: 1/32Duty, 1/6Bias, Vop: 6V
- 3) Operating Temp: -20~+70°C  
Storage Temp: -30~+80°C
- 4) View direction: 6 o'clock
- 5) LED04 backlight - 52 pcs LED chips

DESCRIPTION:		<b>Mechanical Drawing</b>	
SCALE: NTS		 <b>TRI-T COMPANY LIMITED</b>	
SHEET: 1 OF 1			
GENERAL TOL: ±0.3	UNIT: mm		
APPROVALS	DATE	MODEL NUMBER :	
APP:		TMBG12232CPT-01	
CHK:		DO NOT SCALE THIS DRAWING.	
DWN:		PROJECTION	